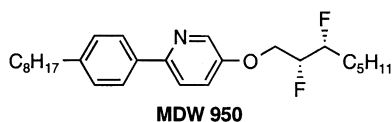


Bistable Ferroelectric Liquid Crystal Photoswitch Triggered by a Dithienylethene Dopant [*J. Am. Chem. Soc.* **2002**, *124*, 7898–7899]. Kenneth E. Maly, Michael D. Wand, and Robert P. Lemieux*

Page 7898. The absolute configuration shown for the Displaytech compound **MDW950** is incorrect. The correct name is (*R,R*)-5-(2,3-difluorooctyl)-2-(4-octylphenyl)pyridine and the correct structure is shown below.



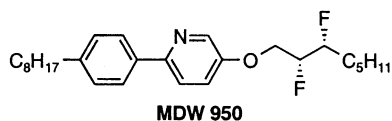
JA0334412

10.1021/ja0334412

Published on Web 02/22/2003

Detection of Chiral Perturbations in Ferroelectric Liquid Crystals Induced by an Atropisomeric Biphenyl Dopant [*J. Am. Chem. Soc.* **2002**, *124*, 13513–13518]. C. Scott Hartley, Carmen Lazar, Michael D. Wand, and Robert P. Lemieux*

Page 13514. The absolute configuration shown for the Displaytech compound **MDW950** is incorrect. The correct name is (*R,R*)-5-(2,3-difluorooctyl)-2-(4-octylphenyl)pyridine and the correct structure is shown below.



JA033442U

10.1021/ja033442u

Published on Web 02/22/2003